



LONG FIELD  
SCHOOL ACADEMY

# REWARDS



LEO

## HOUSE POINTS



- Excellent effort in lessons
- Excellent homework



Expected progress on your achievement window  
(2 points per subject)



- Above expected progress in your achievement window (3 points per subject)
- Demonstrating a core value



Exceptional progress in your achievement window  
(4 points per subject)



TITAN



- Attending an extra-curricular club for a term
- Being a student leader for a term
- 97% or above attendance for a half term
- Completing a graded exam in a musical instrument
- Top Educake or Hegerty user
- Being a featured reader



PHOENIX



- Presenting an assembly
- Helping out at an open evening or parents' evening
- Playing for a school team for a term
- Performing in a show
- Playing for a county level team or above
- Excellent effort over an extended piece of work



PEGASUS

## OTHER REWARDS

End of year reward trip for anyone who earns 100 points



Fruity Friday

EXCELLENT WORK!

Postcards and letters home for excellent work and excellent academic overviews

Your work up around school

Annual Prize Giving – receiving a prize for excellence throughout the year

PRIZE

WOO!

CLAP!

CLAP!

CLAP!

Attendance certificates each half term  
Platinum 100% | Gold 99% | Silver 98% | Bronze 97%

PLATINUM

GOLD

SILVER

BRONZE

£100



# What happens when you don't get it right?

## UNIFORM



Uniform will be checked every day.  
If your uniform is not right we can help you correct it.

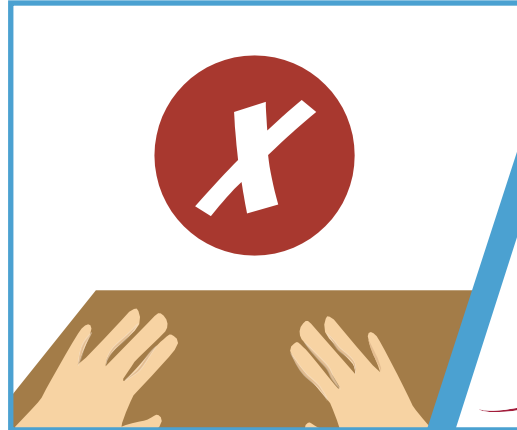


Any item confiscated will need to be collected by your parent at the end of the school day.

## EQUIPMENT



Your equipment will be checked in house time and by your class teacher.



Your tutor will contact parents if you have missing equipment.  
You will be required to attend a detention for missing equipment.

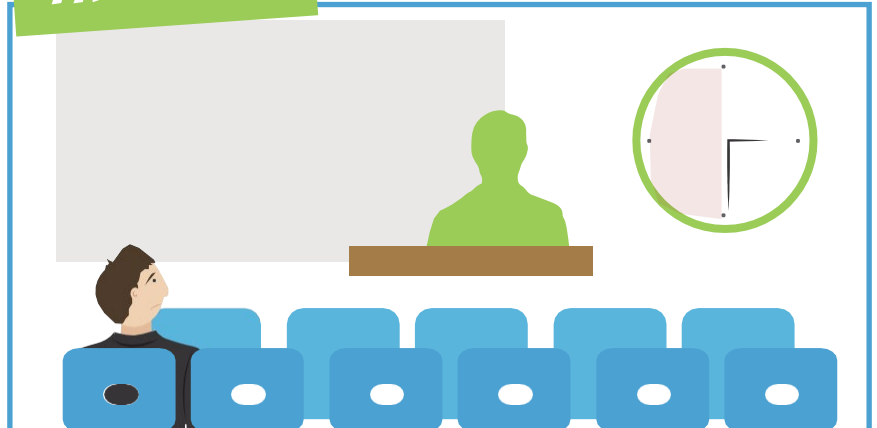


## HOMEWORK



Your subject teacher will set a new deadline.  
If you still fail to hand it in again you will receive a 30 minute detention after school to complete the homework.

## TRUANCY



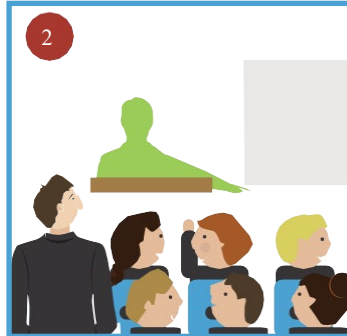
If you miss lessons or truant from school you will make up the time after school.



# POOR BEHAVIOUR IN LESSONS



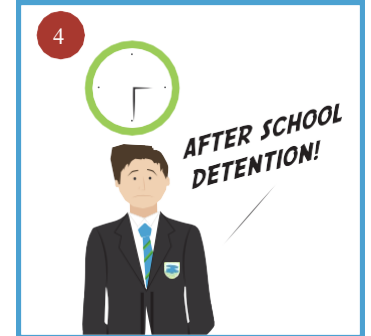
1  
Name on the board.



2  
Hosting.

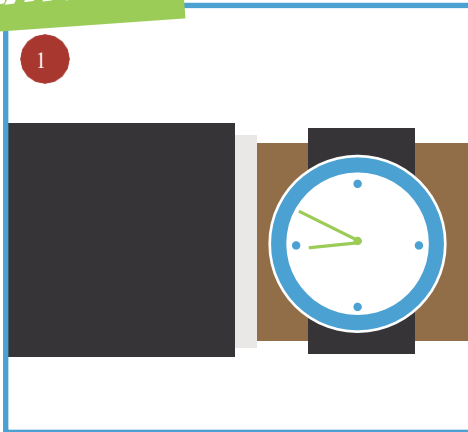


3  
Home contacted.



4  
30 minute detention  
after school.

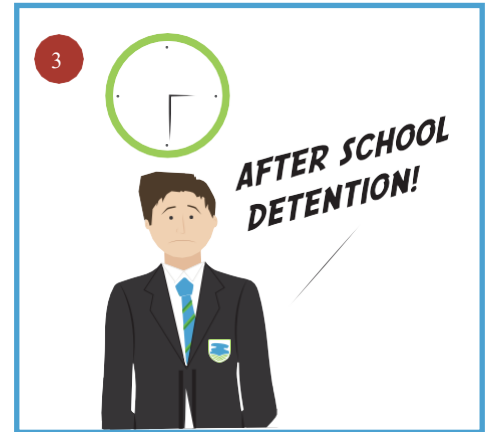
# LATES



1  
Late to School.  
Late to lesson.



2  
Home contacted.  
Home contacted.



3  
30 minute detention after school.  
3 Lates will mean a 30 minute detention.

## What happens when you don't get it right?

1 thing wrong in a day (hosting)

– 30 minute detention after school

More than 1 thing wrong in a day

– 60 minute detention after school

Failure to attend a detention

– Escalates to 60 minutes

Failure to attend a 60 minute detention

– One day's isolation in the isolation room